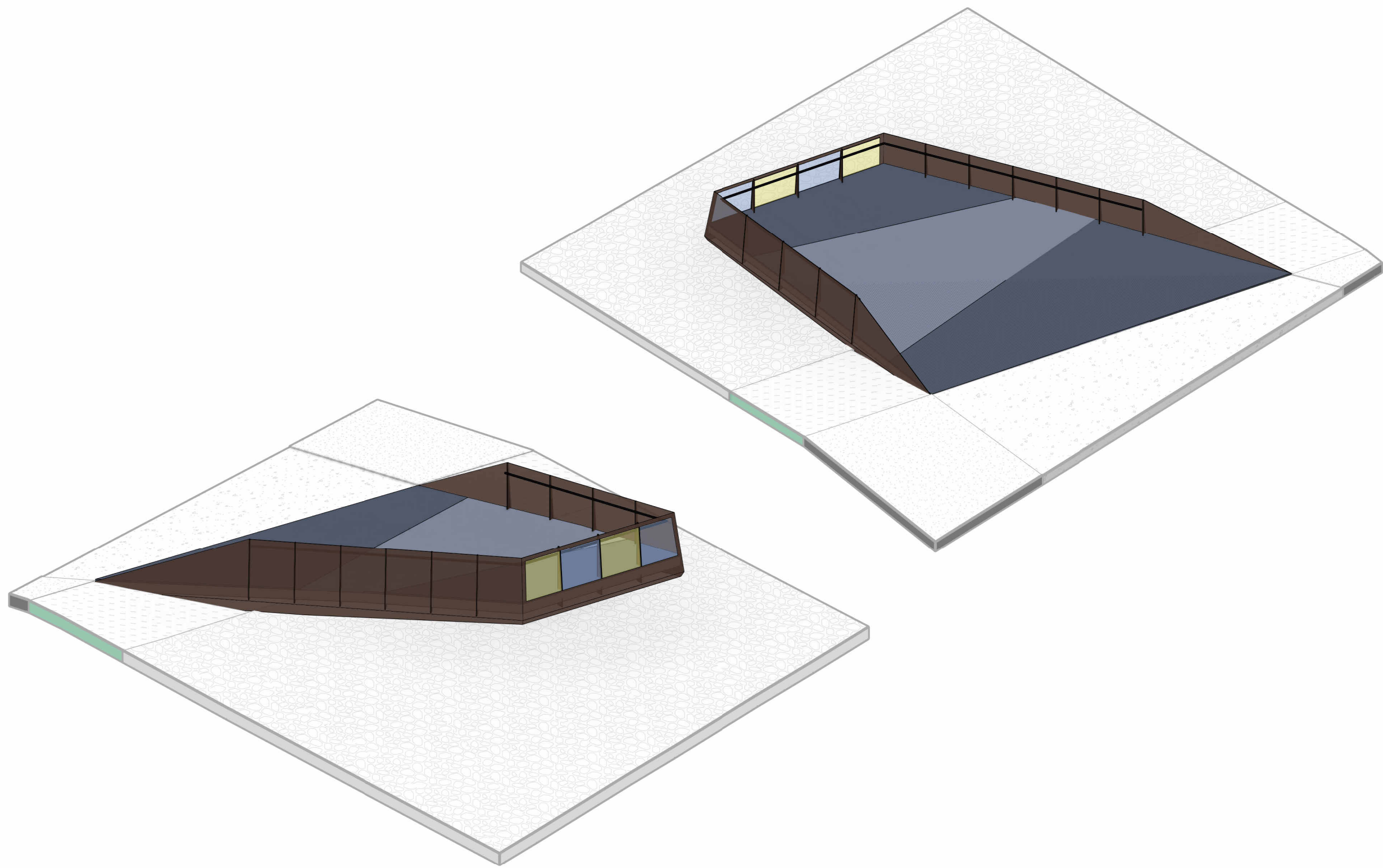
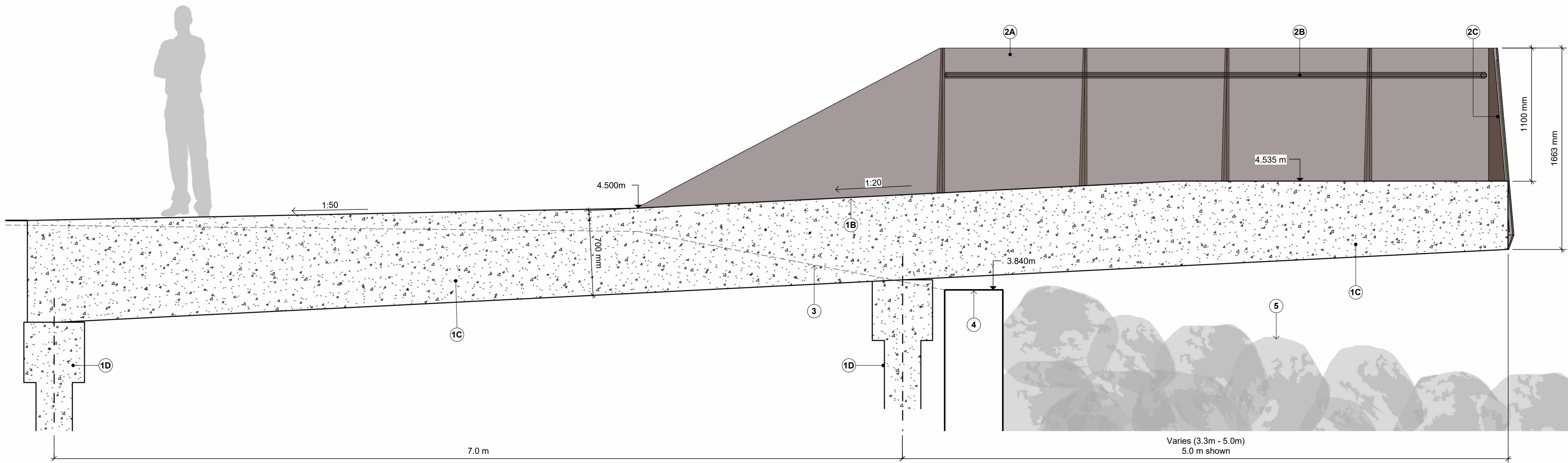


1 Viewing Platform Detail Plan  
SCALE - 1 : 50



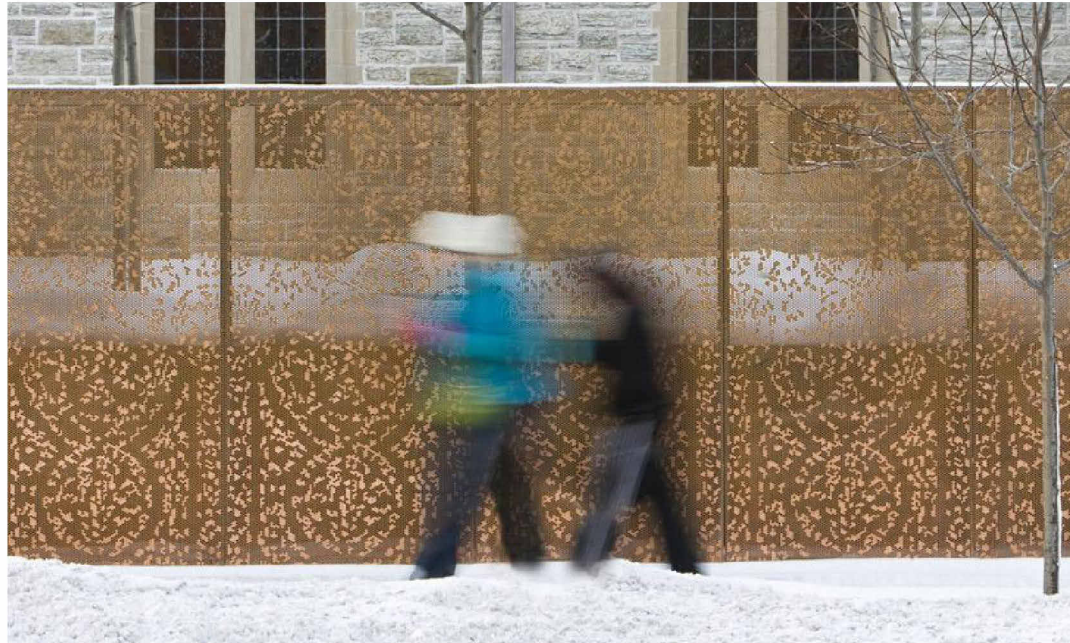
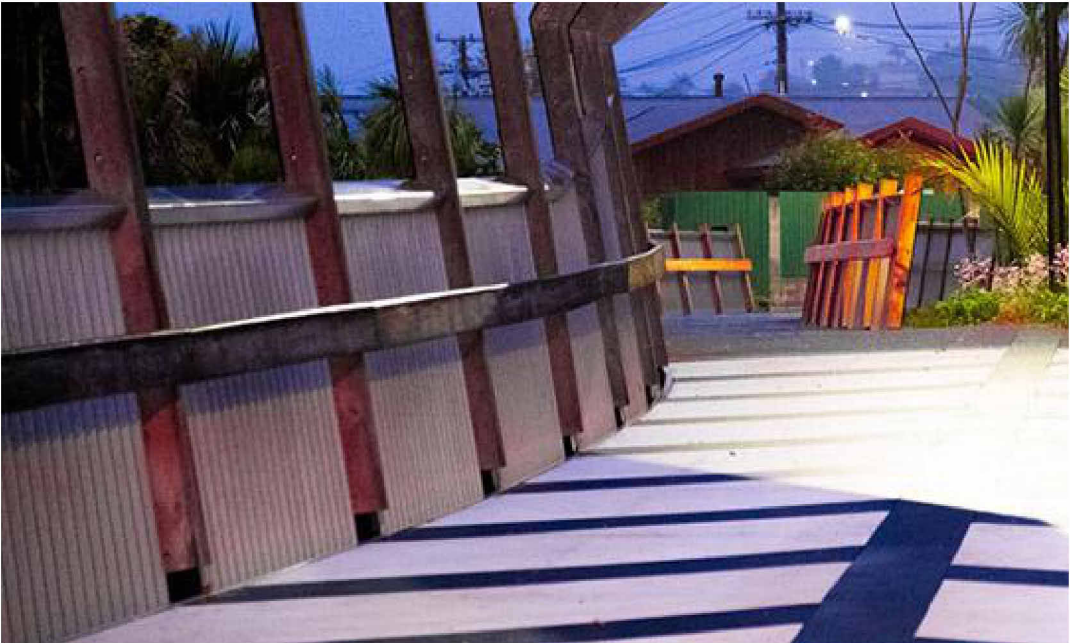
3 Viewing Platform 3D



2 Viewing Platform Section  
SCALE - 1 : 25



1A. GRP Decking



2A. Weathering steel perforated panel

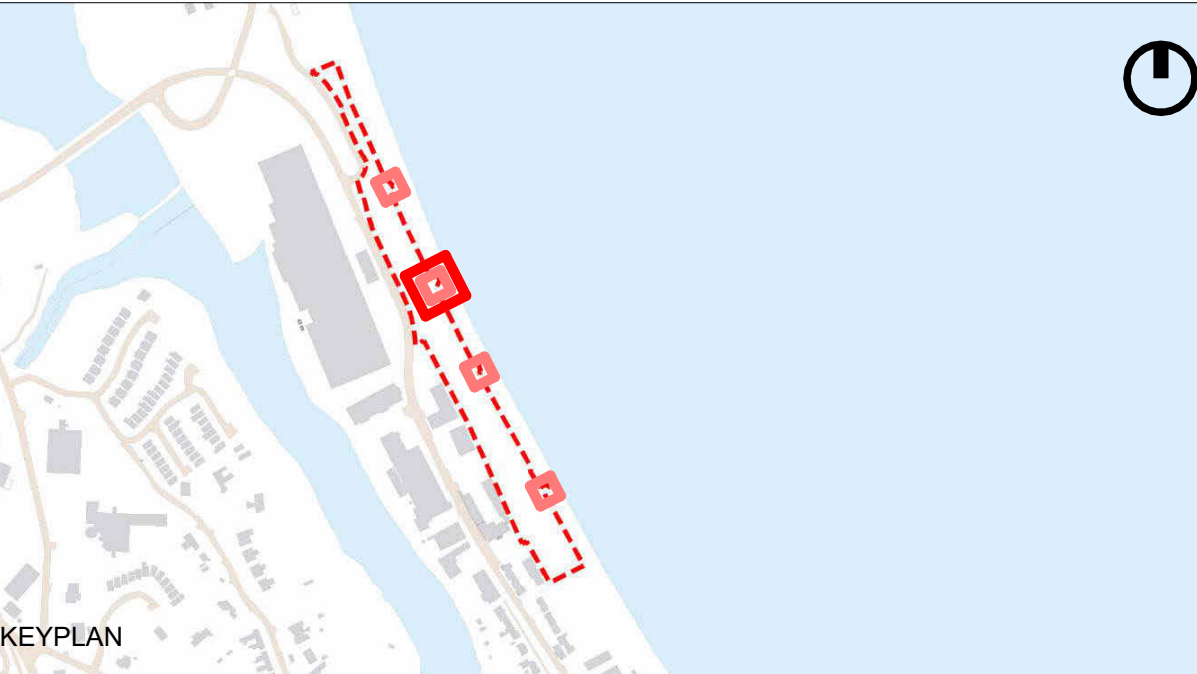


2C. Colour Coated Glazing

Notes:

- Platform**
  - GRP (Glass Reinforced Plastic) heelsafe mini mesh decking
  - Gently sloped access to ensure clearance from revetment
  - Concrete cantilevered substructure to engineers specification
  - Tension/compression piles to engineers specification
- Balustrade**
  - Folded perforated weathering steel panels
  - Steel handrail
  - Colour coated glazing
- Adjacent coastal planting strip**
- Existing sea wall**
- Existing rock revetment**

Drawing to be read in conjunction with 24272-2-D01 Design Statement



A	24.01.2025	Adjusted based on WCC comments
REV	DATE	COMMENTS

**DRAFT FOR PLANNING ONLY**

CUNNANE STRATTON REYNOLDS

LANDPLANNING & DESIGN

GAINSBORO HOUSE,  
24 SUFFOLK STREET, DUBLIN 2  
TEL 01 661 0419 FAX 01 661 0431  
EMAIL info@csrlandplan.ie

PROJECT:	DATE:	13/12/24
The Murrough Waterfront Park Enhancement	SCALE:	AS INDICATED @ A1
DRAWING:	DRAWN:	TS
Viewing Platform Details	CHECKED:	MPO
	DWG. NO:	24272-2-901